

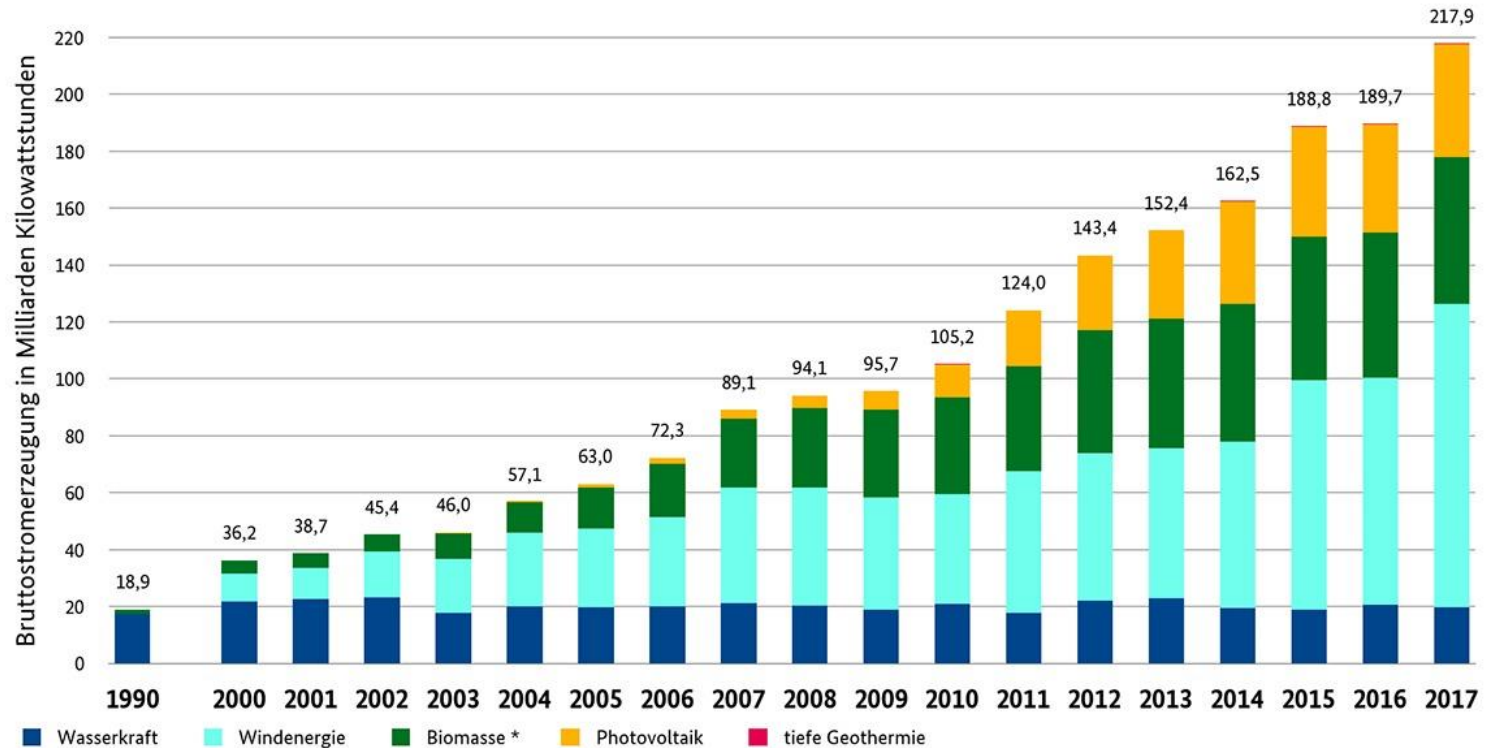


The Economic Benefit of Improved RES Forecasts

Jonas Savelsberg, Universität Basel
Dresden, 27.04.2018

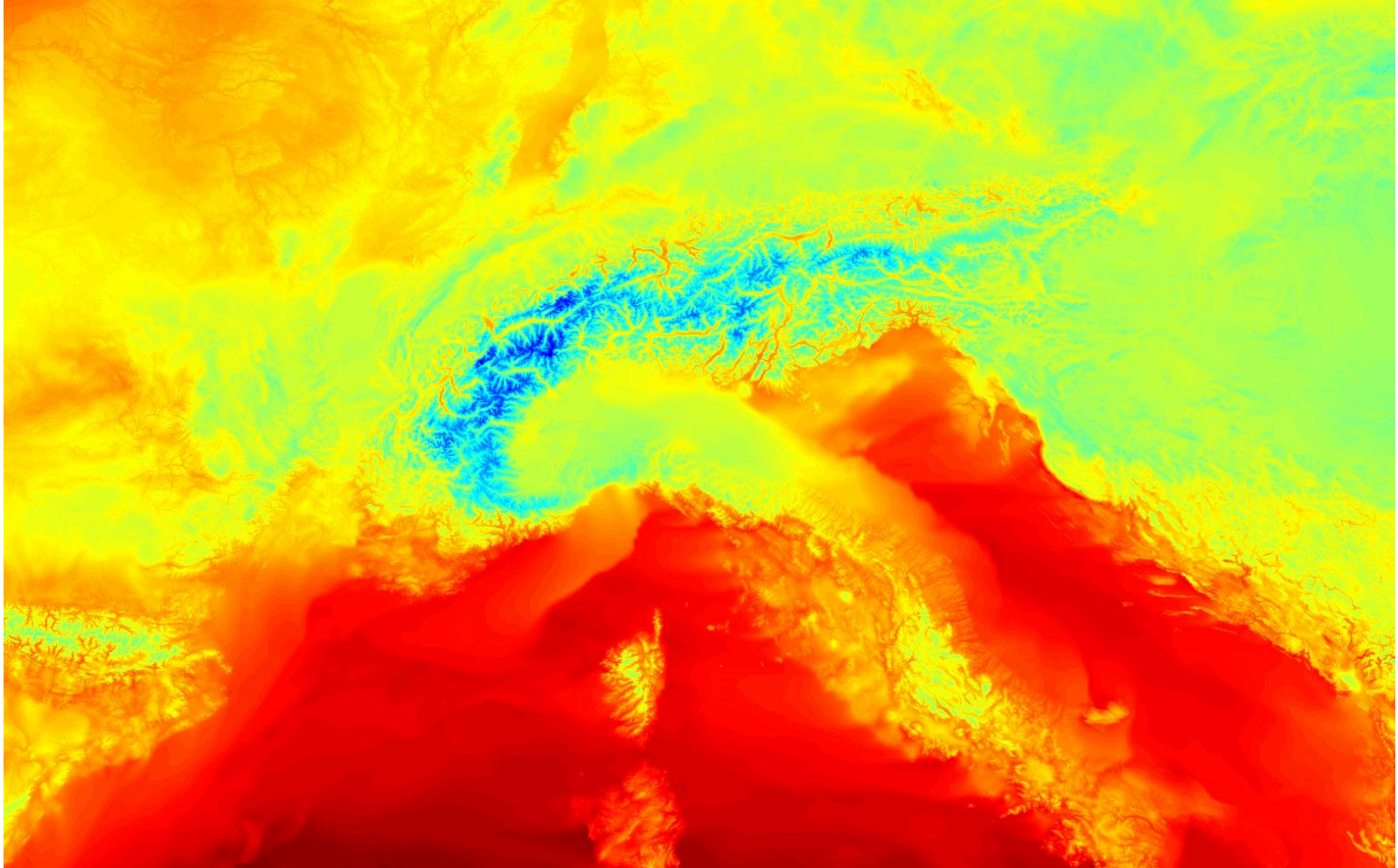
-
- 1. Introduction**
 - 2. Forecast quality**
 - 3. Numerical Analysis**
 - 4. Economic benefit of improved forecasts**
 - 5. Conclusion**

Introduction



* inkl. feste und flüssige Biomasse, Biogas inkl. Biomethan, Klär- und Deponiegas und dem biogenen Anteil des Abfalls, ab 2010 inkl. Klärschlamm; BMWi auf Basis Arbeitsgruppe Erneuerbare Energien-Statistik (AGEE-Stat); Stand: Februar 2018; Angaben vorläufig

Introduction

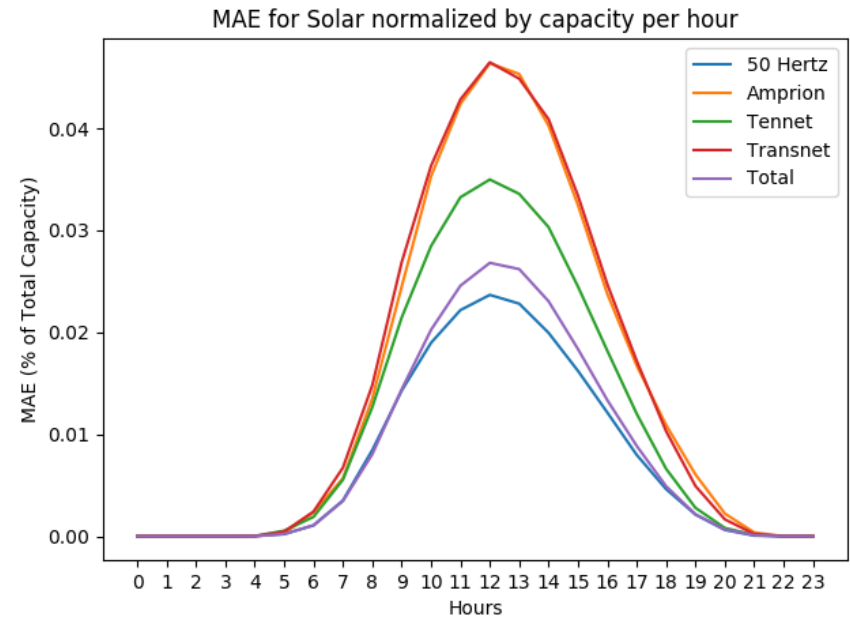
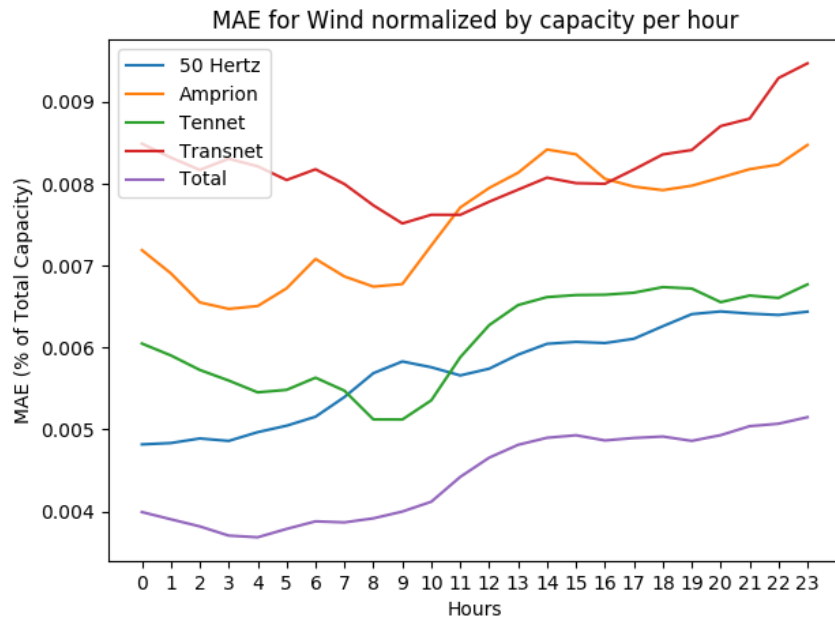


Introduction

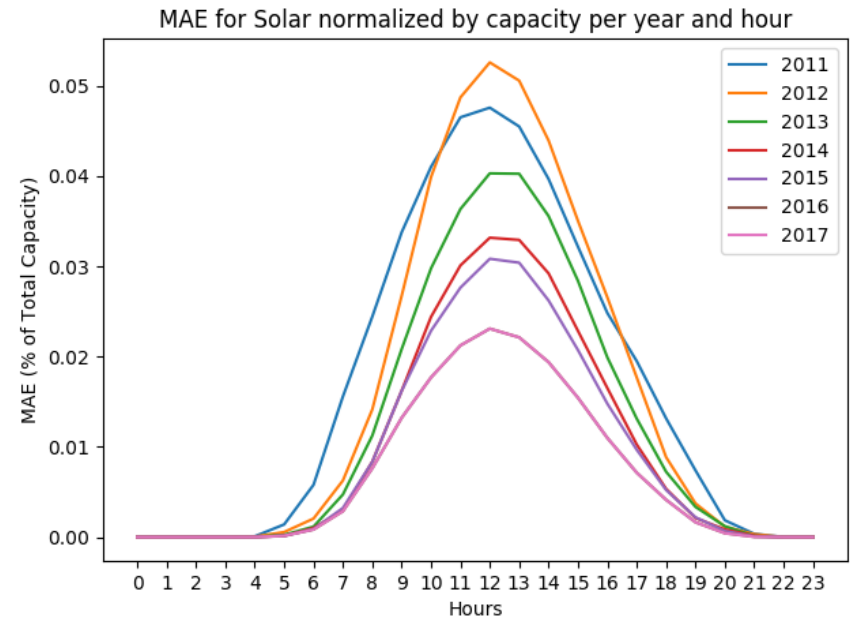
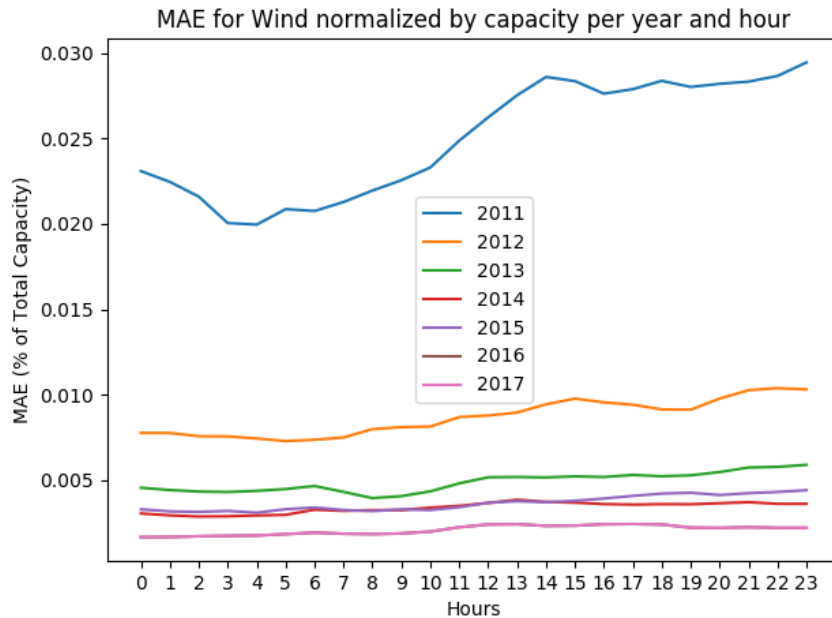


-
1. Introduction
 2. Forecast quality
 3. Numerical Analysis
 4. Economic benefit of improved forecasts
 5. Conclusion

Data on forecasts in Germany



Development of forecast quality



-
1. Introduction
 2. Forecast quality
 3. Numerical Analysis
 4. Economic benefit of improved forecasts
 5. Conclusion

Hourly dispatch model with unit commitment

- **Objective function**

Minimize total costs = Short-term/variable costs

- operationcost
- start-up costs
- cost of using water from storage

- **Energy balance**

Demand = Net-generation including res-infeed and forecast error

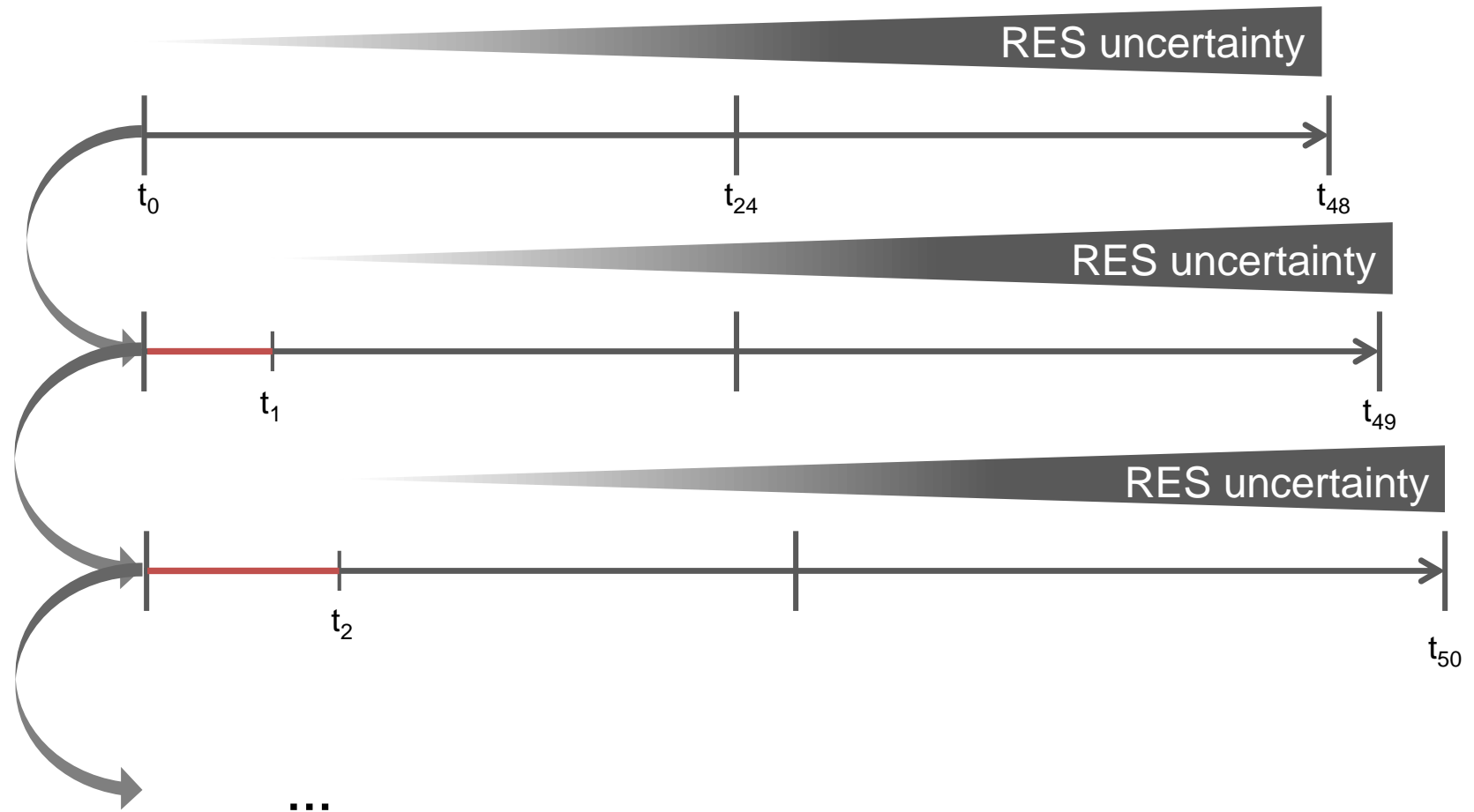
- **Capacity restrictions**

Generation \leq Capacity * Availability
Generation \geq Minimum generation
Pumping \leq Pumpcapacity

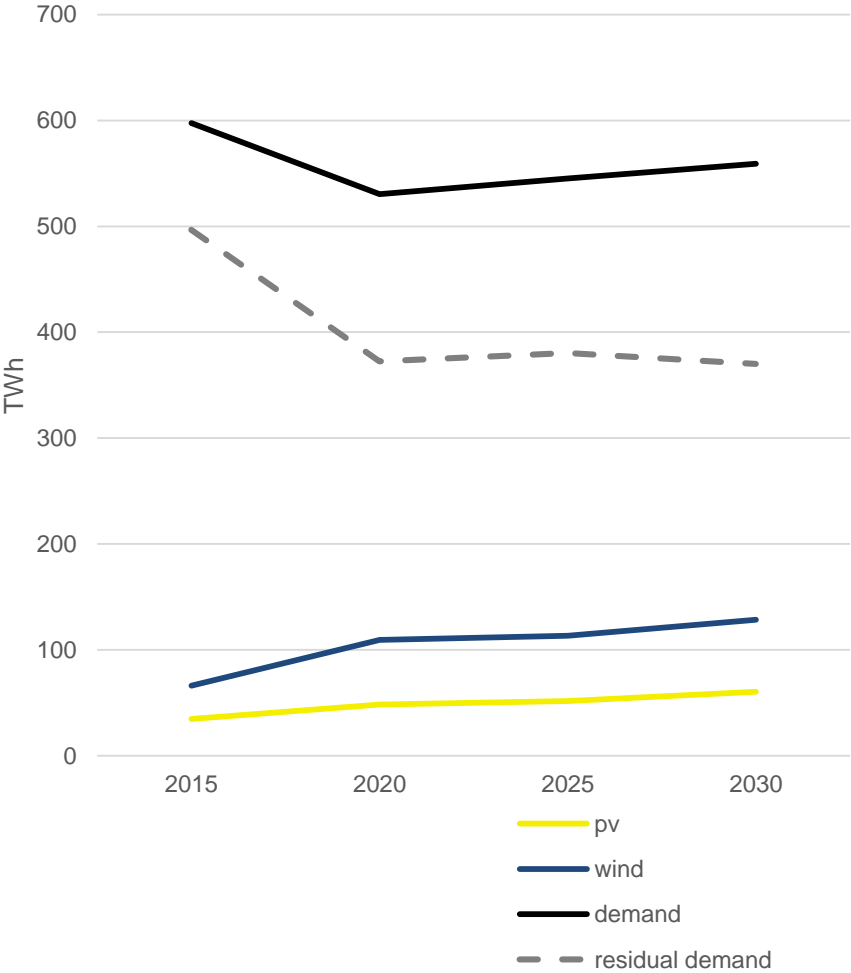
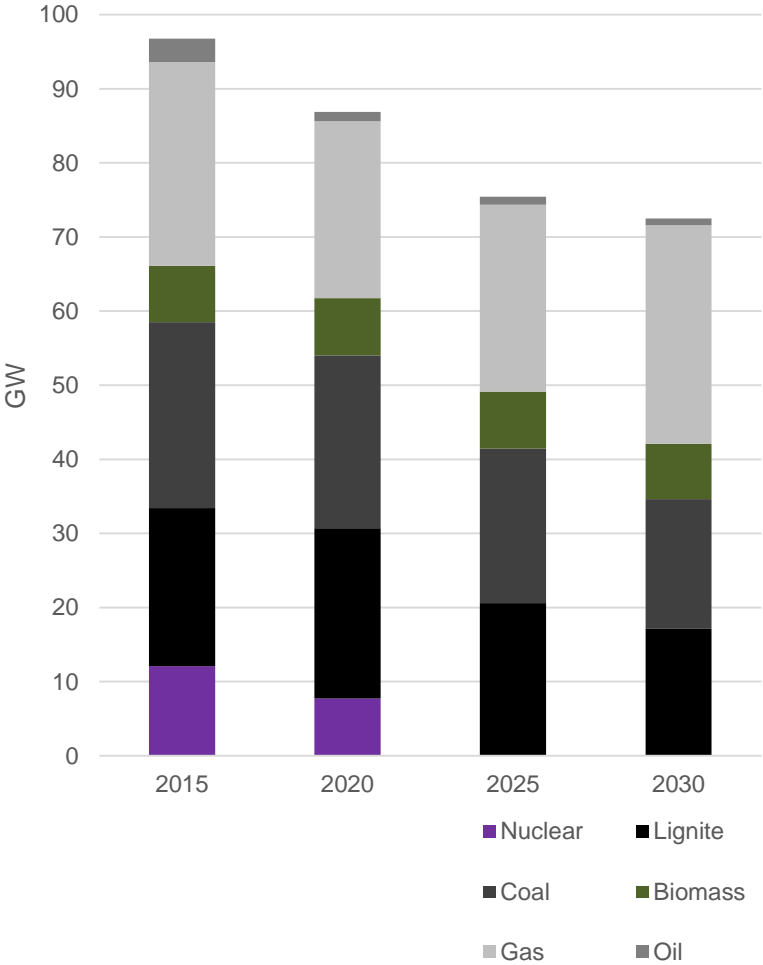
- **Storagebalance**

Storageinflow = Storageusage + Storedelta
Storagecontent \leq Storage capacity

Rolling planning structure



Model inputs



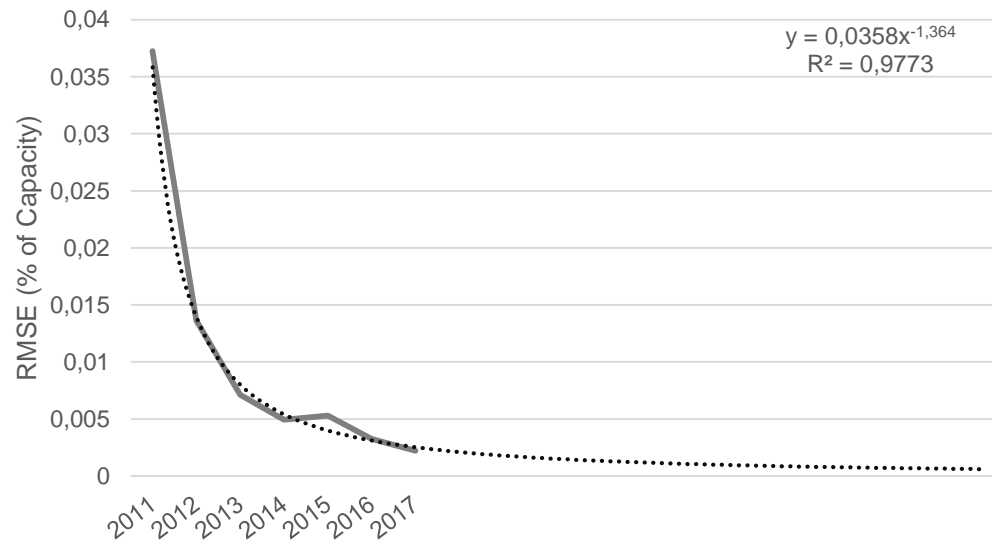
Scenarios

		Electricity system	
		2015	2030
Forecast accuracy	reference*	Ref15	Ref30
	observed	Obs15	Obs30
	extrapolated	Ext15	Ext30

*perfect foresight

Scenario inputs

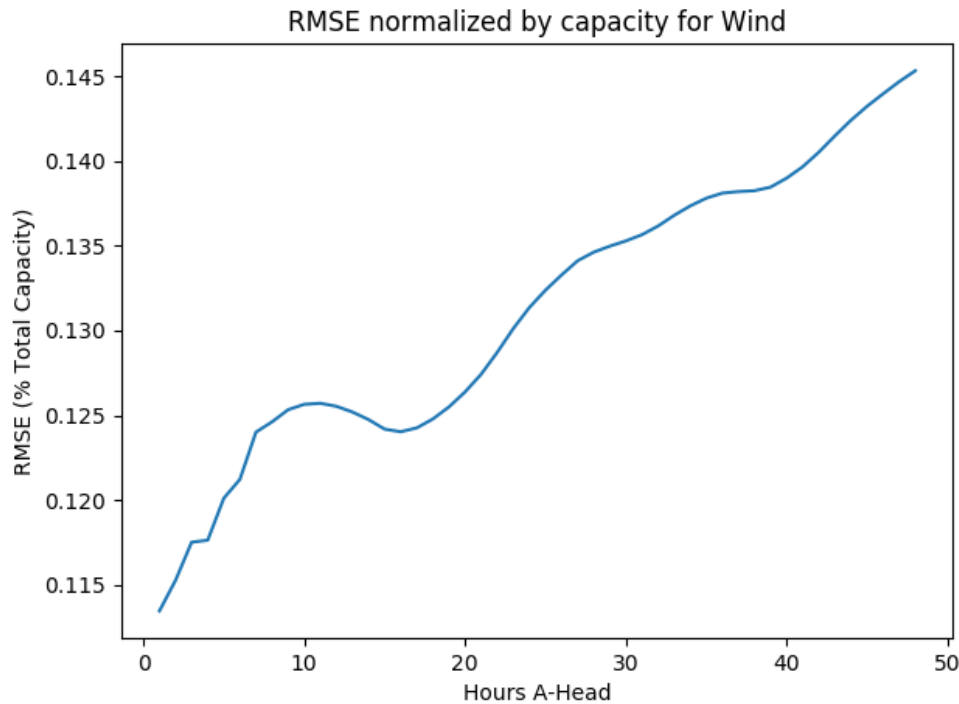
- Forecast improvement interpolation up to 2030:



Forecast Improvement	
2011 - 2015	86%
2011 - 2030	98%

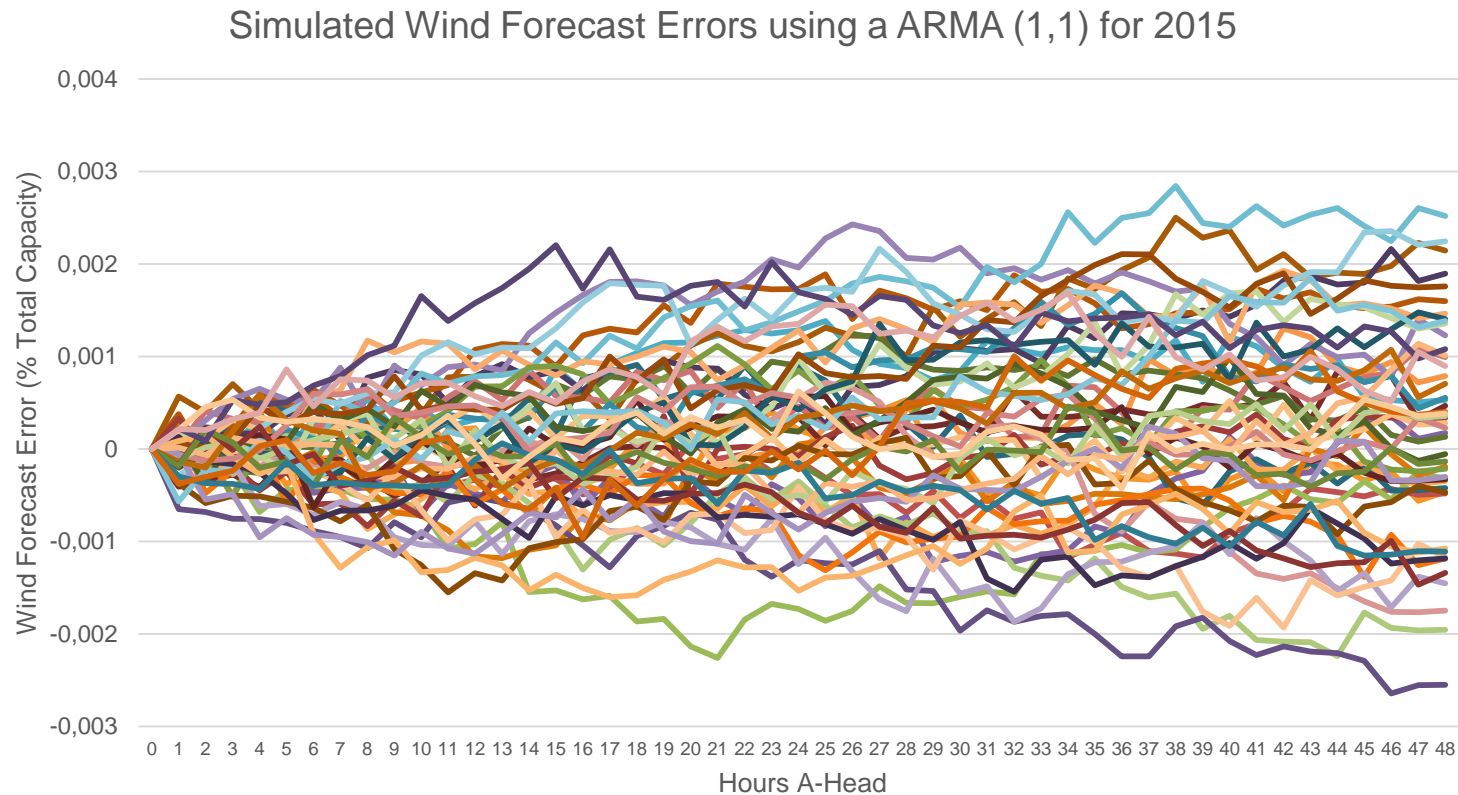
Scenario inputs

- Texas data from 2009 to 2010 on wind errors forecast up to 48 hours a-head.
- The simulation approach for wind forecast errors is based on an ARMA (1,1), using the Nelder-Mead optimization to derive the ARMA parameters α , β , σ .

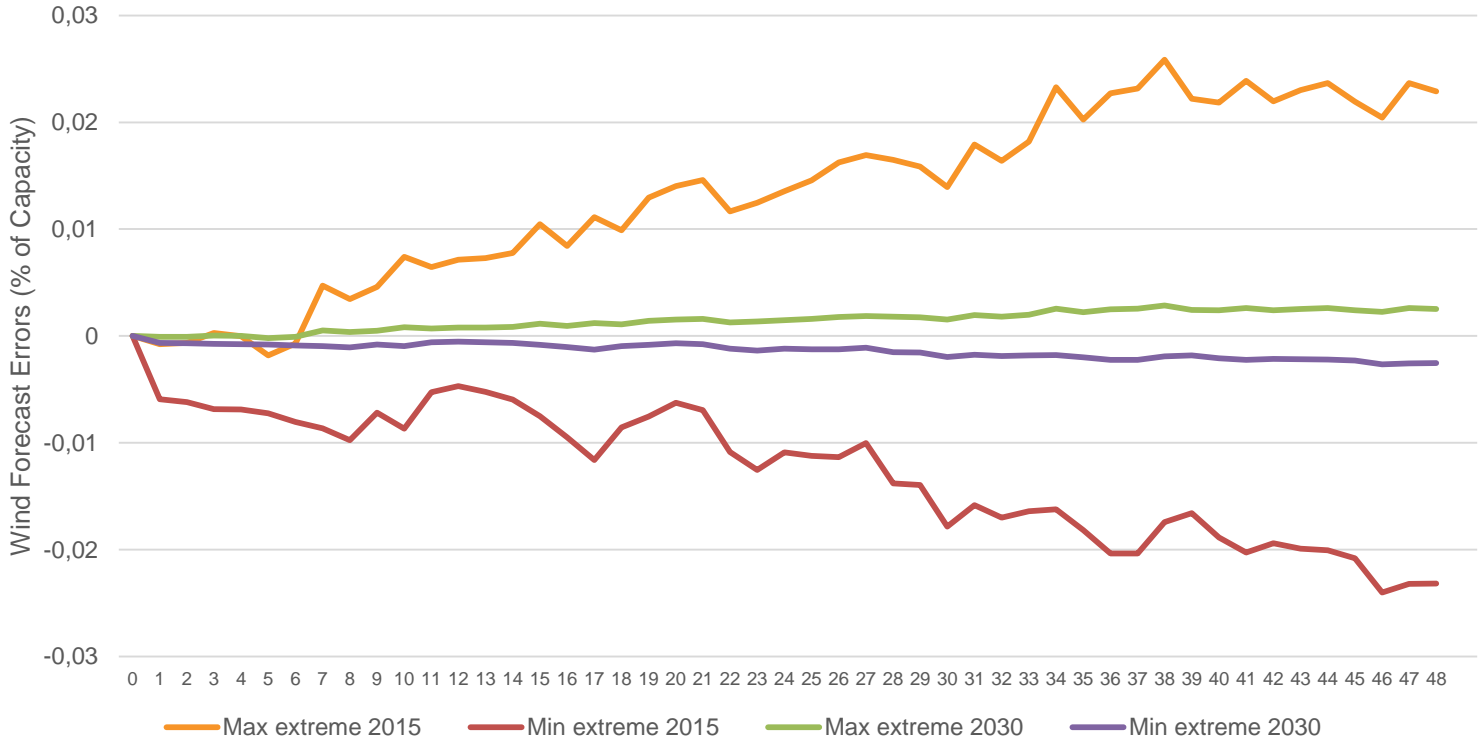


$$Wind_{ft}^{err} = \alpha Wind_{ft-1}^{err} + Z_{ft} + \beta Z_{ft-1}$$
$$\alpha = 1.02, \quad \beta = -0.33, \quad \sigma = 0.014$$

50 simulated wind forecast errors

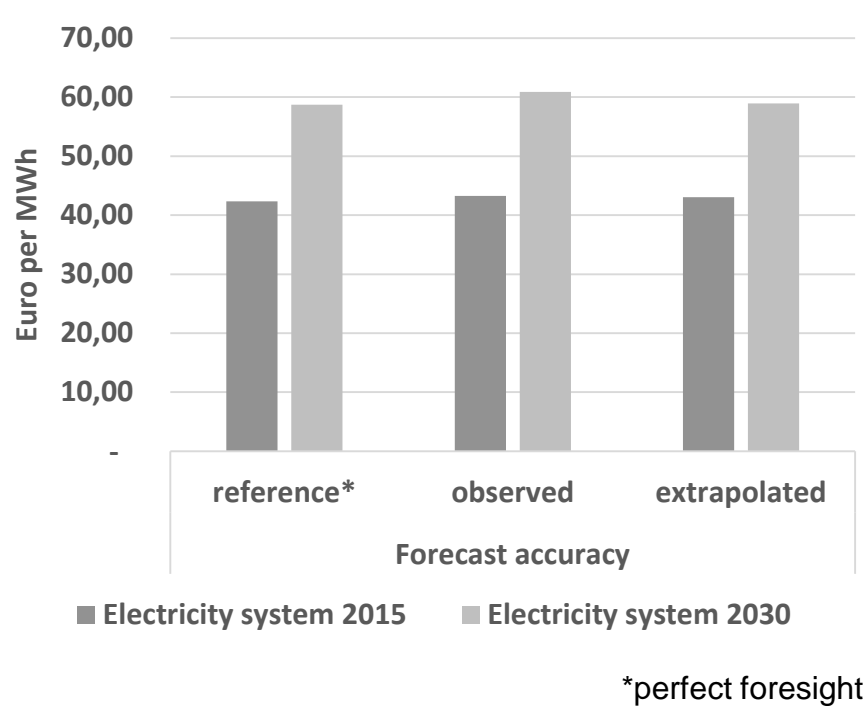


Extreme case scenarios



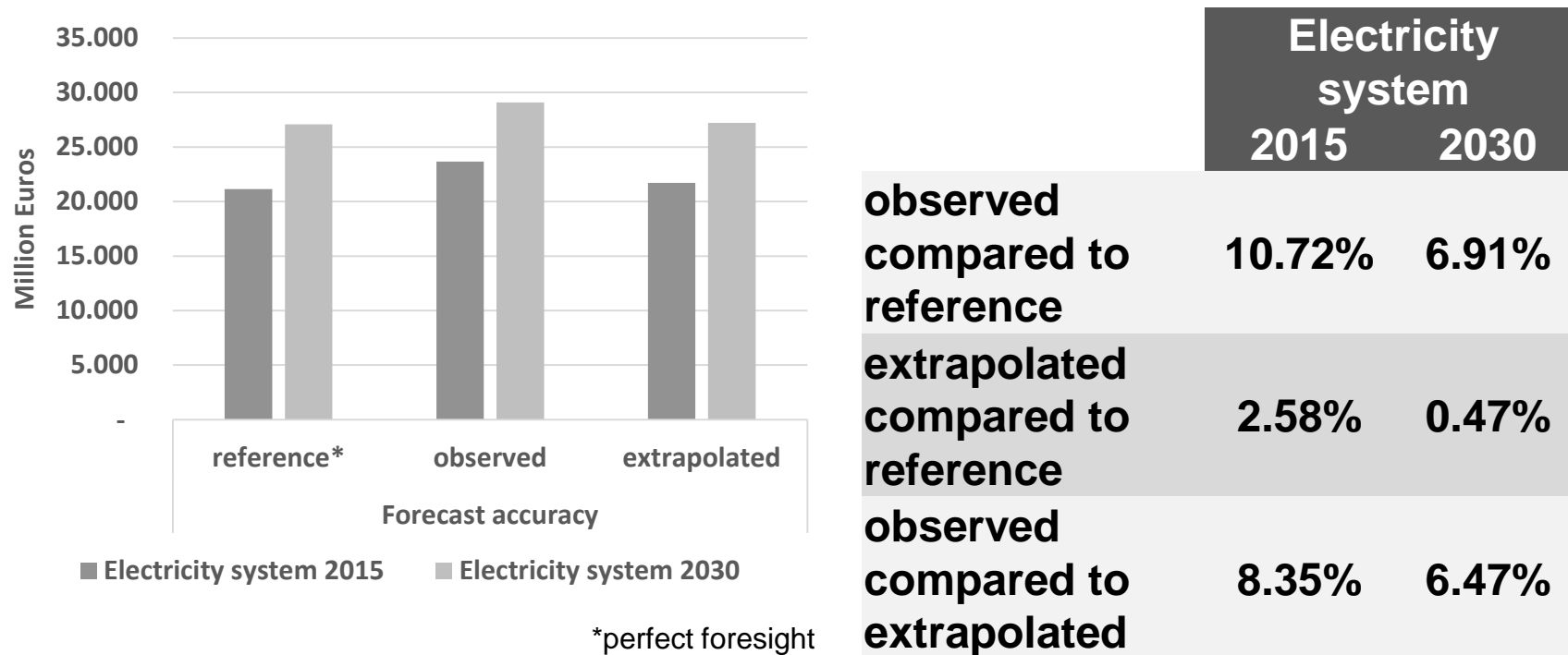
-
1. Introduction
 2. Forecast quality
 3. Numerical Analysis
 4. Economic benefit of improved forecasts
 5. Conclusion

Results (preliminary) – electricity prices



	Electricity system	
	2015	2030
observed compared to reference	2.10%	3.52%
extrapolated compared to reference	1.67%	0.37%
observed compared to extrapolated	0.43%	3.16%

Results (preliminary) – system costs



Conclusion

- There has been a **strong trend in forecast quality improvements** in the past
- Even though it is uncertain how this trend will continue in the future, our preliminary results show an **impact of improvement in forecast accuracy**
- **This leads to lower electricity prices and lower system costs**

Outlook:

- Redo analysis with better data
- Include solar forecast errors
- Include balancing in modelling framework

Jonas Savelsberg
Energy Economics
University of Basel

jonas.savelsberg@unibas.ch