



The Graduate Academy offers a wide range of advisory services to **(prospective) doctoral candidates, post-docs** and **their supervisors** at TU Dresden.

All GA advisors are professionally trained coaches and/or advisors and have several years of work experience in academic advisory services. Regular training as well as close contact and cooperation with other relevant parties in the university context ensure high quality standards of the offered services.

The offered services also take into account specific needs of early-career researchers with disabilities and chronic diseases.

Basic principles of GA-Counseling

- Openness
- Confidentiality
- Appreciation
- Professionalism
- A systemic perspective
- Helping people to help themselves
- A resource- and solution-oriented approach
- Networking

Contact

Graduate Academy at TU Dresden

Postal address:

TU Dresden
D-01062 Dresden

Visitor address:

MommSENstraße 7
D-01069 Dresden

Phone: +49 351 463 42241 | 42242

Fax: +49 351 463 37001

E-Mail: graduiertenakademie@tu-dresden.de

<https://tu-dresden.de/ga>

Follow us on

Find more detailed information as well as all application forms on our homepage:

<https://tu-dresden.de/ga/beratung>

Image sources:

denisismagilov / stock.adobe.com,
silkstock / stock.adobe.com, Amac Garbe



**TECHNISCHE
UNIVERSITÄT
DRESDEN**

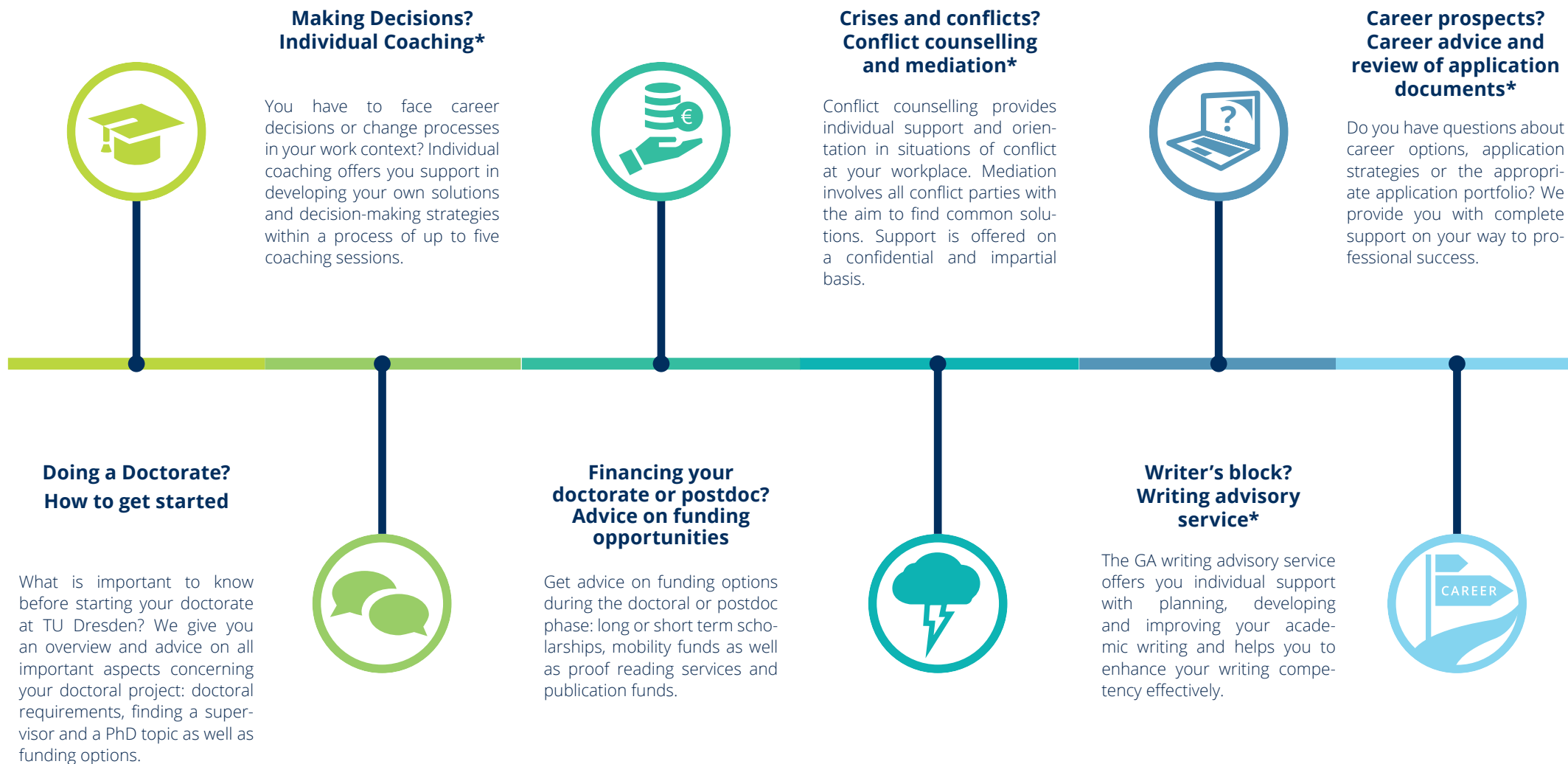
www.tu-dresden.de/ga



GRADUATE ACADEMY

ADVICE | COACHING

Advisory services and coaching offers of the GA at a glance



Services indicated with * are exclusively available for members of the Graduate Academy. Doctoral candidates and their supervisors as well as postdocs of TU Dresden can become GA members at any time. You can find more information and the possibility to register at: www.tu-dresden.de/ga.