



TECHNISCHE  
UNIVERSITÄT  
DRESDEN



GRADUATE  
ACADEMY



GRADUATE  
ACADEMY



# ***Financing your PhD***

## Funding options



## I. Employment

- 
- at the university

- 
- at a non-university research organization



## Employment at an university

### **How to find an employment?**

- job offers
  - [www.tu-dresden.de/graduertenakademie](http://www.tu-dresden.de/graduertenakademie)
  - vacant positions for young scientists at the TU Dresden
- ask supervisor



## Employment at an university

- full- or part-time as scientific staff or research assistants (WHKs) on a budget heading at a professorship or in a third-party funded project
- payment according to the collective agreement of public services (TVöD)
- approximately every third doctoral candidate works at the university
- very few specific doctoral positions
- often teaching activities, student supervision or involvement in projects unrelated to doctoral thesis



- 
- at the university

- 
- at a non-university research organization



Employment at a non-university research organization

### **How to find a doctoral position?**

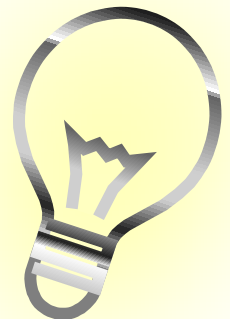
- ask supervisor
- job offers of DRESDEN-concept partners, e.g.:
  - Fraunhofer
  - Helmholtz
  - Max Planck
  - Leibniz
  - University Hospital Carl Gustav Carus
  - museums



## Employment at a non-university research organization

- only research, no teaching activities
- non-university organization have no right to award doctorates

→ **confirmation of acceptance as doctoral candidate by a faculty of the TU Dresden necessary**





## II. Scholarships

- variety of scholarships
- usually funding from the beginning of the doctorate up to 3 years
- related qualification program

Graduate Academy offers:

- ✓ individual advice and information
- ✓ overview on our website regarding funding authorities, funding databases and search engines



## Scholarships funding possibilities

TU Dresden / Graduate Academy

Organizations for the promotion of young talents  
(Begabtenförderungswerke) and foundations

German Academic Exchange Service (DAAD)

## TU Dresden / Graduate Academy



- Saxon Scholarship Program
- Scholarship Program for Early-Career Female Scientists of TU Dresden
- PhD Scholarships funded by the European Social Fund
- Back to Research Grants
- Short-term Scholarships: Bridging Grants or Grants for the Completion and Wrap-up Phase of the doctorate

## What should I pay attention to if I want to apply?



- call for applications and deadlines on the website of the Graduate Academy
- long-term scholarships have only one deadline for submission per year: 30th April (PhD Scholarships funded by the European Social Fund: 31st October)
- compatibility of the scholarships
- selection criteria:
  - qualification of the applicant (academic performance, publications, prizes/awards)
  - quality of the research project
  - quality of letters of recommendation
  - social criteria (e.g. children, family members in need of care)

## Organizations for the promotion of young talents (Begabtenförderungswerke) and foundations

- overview of all organizations for the promotion of young talents (Begabtenförderungswerke) and foundations:  
[www.tu-dresden.de/graduertenakademie](http://www.tu-dresden.de/graduertenakademie)  
→ PhD Funding – Organizations for the promotion of young talents (Begabtenförderungswerke) and foundations
- funding available from
  - independent foundations
  - party-affiliated foundations
  - denominational foundations
  - business related foundations
- further foundations, e.g. Deutsche Telekom Foundation or German Federal Environmental Foundation

## Independent and party-affiliated foundations at a glance

German Academic  
Scholarship Foundation

- nondenominational, politically and ideologically independent

Friedrich Ebert Foundation

- closely associated with SPD

Konrad-Adenauer-  
Foundation

- closely associated with CDU

Rosa-Luxemburg-  
Foundation

- closely associated with Die Linke

Hanns-Seidel-Foundation

- closely associated with CSU

Friedrich-Naumann-  
Foundation

- closely associated with FDP

Hans-Böckler-Foundation


- German Trade Union Federation

Heinrich-Böll-Foundation

- closely associated with Die Grünen

## **Applications for scholarships at organizations for the promotion of young talents (Begabtenförderungswerke) and foundations**

- ✓ outstanding university degree
- ✓ convincing research project
- ✓ social commitment according to the goal of the specific foundation
- ✓ political conviction (party-affiliated foundations)
- ✓ compatibility of selection criteria
- ✓ discipline-specific applications



**Planning is everything!**  
**Approx. time until beginning of doctorate:**  
**12 months**

## German Academic Exchange Service (DAAD)

- promoting international doctoral candidates
- country-specific deadlines
- application from home country **or** up to 15 months after arrival in Germany
- very good English language skills
- all offers incl. funding authorities besides the DAAD:  
DAAD website → Information for Foreigners - Finding Scholarships - Scholarship Database





# Employment or scholarship?



## Employment



- insurable employment
- often close proximity between scientific work and topic of doctoral thesis
- professional exchange with colleagues
- teaching experience
- better integration into science system → qualification for future academic career



- Act of Academic Fixed-Term Contract (Wissenschaftszeitvertragsgesetz)
- enormous workload besides doctorate
  - often longer doctorate period
- lower income due to part-time job/research assistant (WHK)

## Scholarship



- flexible time management
- full attention on doctorate possible
- free choice of workplace
- funding period of 3 year (if applicable, extension of 1 year possible)
- sideline activities sometimes permitted



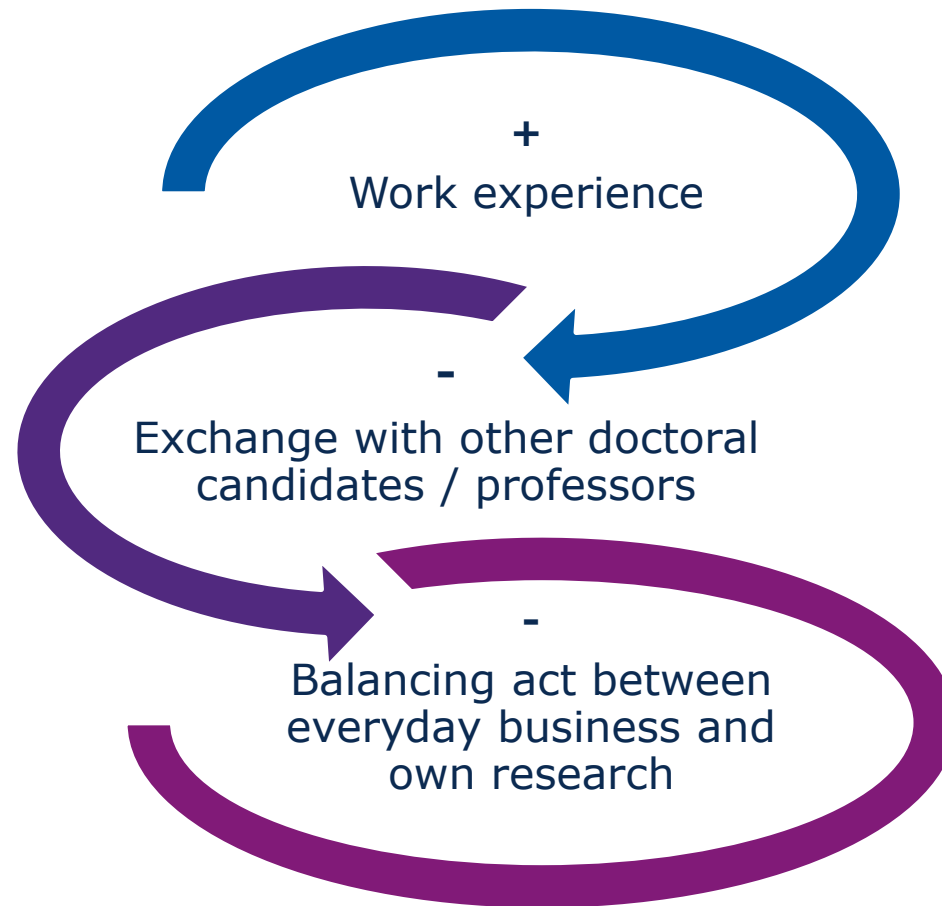
- no insurance cover
- no holiday entitlement
- funding often only available until thesis submission
- networking/exchange with other doctoral candidate sometimes difficult
- less integrated into academic landscape
- often little monthly scholarship payment

### **III. Industry-sponsored doctoral scholarships**

- doctorate in cooperation with a company (e.g. industry-sponsored doctorates of the ESF)
- companies finance doctorates due to common economics or scientific interests
- cooperation agreement with TU Dresden
- usually call for papers, unsolicited applications also possible
- contact often organized by supervisor
- very common in the following sectors: automotive, electrical engineering and telecommunications
- scope of work and level of remuneration according to individual agreement

Further Information: Directorate 5 – Research Funding and Transfer (Unit 5.3 Transfer) of the TU Dresden

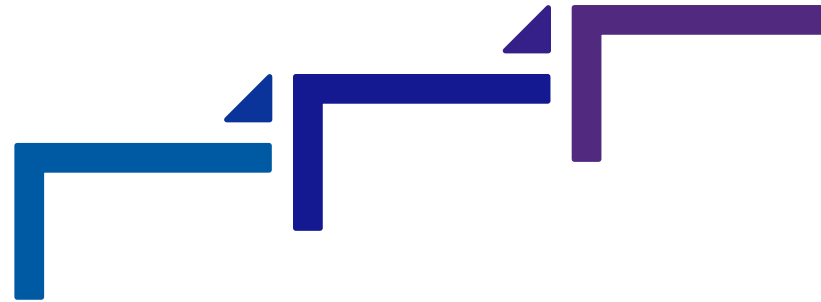
## Pro and cons of industry-sponsored doctoral scholarships?



## IV. Self-financing

- self-financing of the doctorate:
  - financial support from family
  - occupation outside the realm of science
- little/limited time for research and/or doctoral thesis
- **Self-financing is often the most difficult way!**
  - lack of time resources and doctorate-related proximity as well as professional exchange with other doctoral candidates and professors
  - often delayed completion of doctoral degree



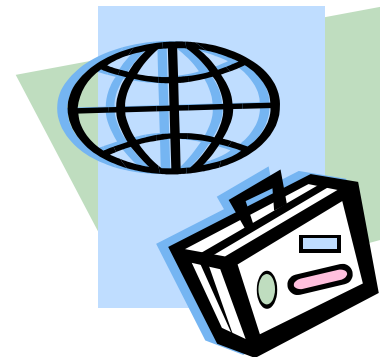


**Research stays abroad enrich  
your doctoral studies...**

## Why is a research stay abroad important?

- enriching ones own scientific work, e.g. field research, cooperation with relevant research organizations, experts etc.
- visiting conferences or congresses to enhance the visibility of ones own research and networking with suitable experts
- constant further qualification
- possible future postdoc position abroad due to contacts

 **Sounds good! But how can I finance such a research stay abroad?**





## Financing options for stays abroad

### Graduate Academy

- travel grants for short-term research stays abroad up to 3 months (max. 3,000 EUR)
- great!<sup>ipid4all</sup> – research stays up to 3 months (according to DAAD lump sums)
- travel awards (max. 1,500 EUR)

### German Academic Exchange Service (DAAD)

- research stays (max. 6 months)
- one-year scholarships (max. 12 months)
- lecture tours and congress trips

### Employment

- contract with host institution (e.g. continued payment of TU Dresden salary)

### Erasmus+

- teaching mobility aid (only employed doctoral candidates of the TU Dresden)

### Doctoral Scholarship

- travel grants on request (1,500 to 5,000 EUR)

### Association of Friends and Sponsors of TU Dresden e.V.

- travel grants (max. 500 EUR)

## Checklist for applying for mobility allowances

- ✓ possible deduction from the scholarship → see guidelines of scholarship provider
- ✓ leave of absence when employed? Take a semester off when enrolled?
- ✓ travel allowance, i.e. no full coverage of costs
- ✓ travel cancellation insurance recommended
- ✓ letter of invitation from host institution

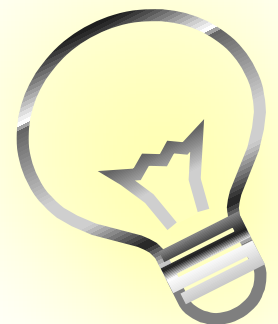


**+++Check application deadlines!+++**

A comprehensive preparation for a longer stay abroad takes about 6 to 12 months!

## **A promising application**

- Travel Award: active participation required
- take forward the doctorate and the scientific endeavour
- convincing concept and methodology
- work schedule should focus on funding period
- complete application documents
- convincing reasons for choice of host institution or event



## Important information regarding financial planning

Find out early...

...required insurances and costs for insurances

...living expenses and rents (desposit?) of the host country

...total travel expenses

...money for leisure activities and trips to explore the country and its people



**Only with sufficient preparation you will benefit from the stay abroad...scientifically and personally!**

## **Graduate Academy offers advice and information concerning all phases of the doctorate**

- advisory service
- open consultation hours: every Tuesday
- detailed information regarding funding on our website
- information events: funding programs for young scientists (March and September)

**We are happy to be at your service and will advise you in detail!**





# Thank you for your interest!

## Contact:

Graduate Academy

TU Dresden

Mommsenstraße 7

01069 Dresden

[graduiertenakademie@tu-dresden.de](mailto:graduiertenakademie@tu-dresden.de)

[www.tu-dresden.de/graduiertenakademie](http://www.tu-dresden.de/graduiertenakademie)

Tel.: +49 351 463 42241 | 42242

Fax: +49 351 463 37001