

- Prozesskette aufbauen aus:
- 3D-Druck, Roboter und Fräsen
- CAM- und Computergrafik lernen / anwenden
- Digital Twin entwickeln

AUTOMATE THE PRODUCTION (PLANNING)



Ansprechpartner:

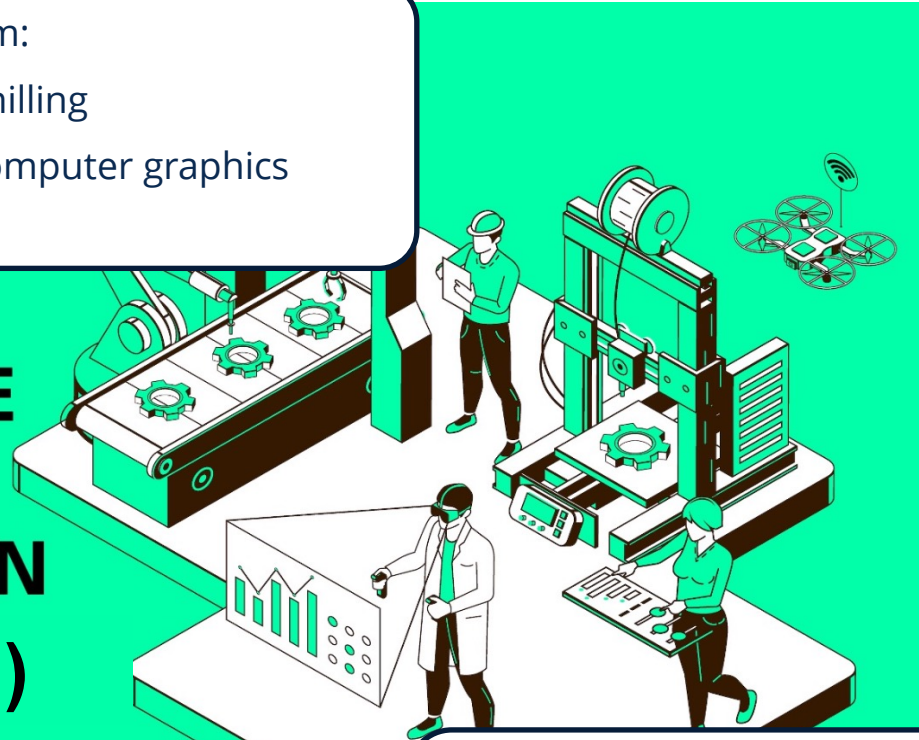
Dr.-Ing. Martin Erler

Zeug 327b

martin.erler@tu-dresden.de

- Build a process chain from:
- 3D printing, robots and milling
- Learn / apply CAM and computer graphics
- Digital Twin development

AUTOMATE THE PRODUCTION (PLANNING)



Contact:

Dr.-Ing. Martin Erler

Zeus 327b

martin.erler@tu-dresden.de