

“Growing Like a Neuron in a Diverse Environment: A Journey of Self-Discovery”

Key words:

self-discovery, multiple environments, adaptation and growth, neuronal self-portrait

A journey of self-discovery

The participants of this workshop will discover how their own primary competences, core values, and networks change in multi- and intercultural environments and thereby influence their personal and professional development.

With the help of cognitive methods and games, but also intensive exchange, the participants, accompanied by the coach, will embark on a special journey of self-discovery.

Target Participants

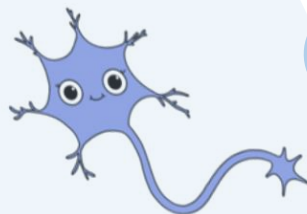
Experience in a multicultural environment
e.g.,
studying abroad, working or living overseas,
or working/living in relation to other cultural environments

Coach

Dr. Yiquan Shi
a cognitive neuroscience researcher with an intercultural background

Take home a neuronal self-portrait

Each participant will eventually create a self-portrait (using prepared props and cards to be provided during the workshop :).



adapted from [chirostudent's](#) design