

Exchange Program Information Sheet

Contact Information

Name of University	The Hebrew University of Jerusalem
University website	University / Rothberg International School (RIS)
Office responsible for Exchange Program	The International Office
Head of the International Office	Ms. Jane Turner
Postal Address	Mount Scopus Jerusalem 9190501 ISRAEL
Phone	+972-(0)2-5881032; +972-(0)2-5880417; +972(0)-2-5881914
Exchange Coordinators	Incoming students: Ms. Ayala Feinmesser-Mizrahi Outgoing students (European partners): Ms. Liat Gabai Outgoing students (Non-European partners): Ms. Daniella Faktorovich
COVID-19 UPDATES	Updates for International students - https://overseas.huji.ac.il/corona-updates/ General updates from the university management https://vp-director.huji.ac.il/corona-updates Israel Ministry of Health updates https://govextra.gov.il/ministry-of-health/corona/corona-virus-en/
General Information	The Hebrew University of Jerusalem, Israel's first university, is a multidisciplinary institution of higher learning and research where intellectual pioneering, cutting-edge discovery and a passion for learning flourish. It is a center of international repute, with ties extending to and from the worldwide scientific and academic community and where teaching and research interact to create innovative approaches that ensure the broadest of educations for its students. Ranked among the world's leading universities, at the Hebrew University Israelis of all backgrounds receive a university education where excellence is emphasized; where advanced, postgraduate study and research are encouraged; and where special programs and conferences attract students and academics from around the world. At its core, the Hebrew University's mission is to develop cutting-edge research, to educate future leaders in all walks of life, and to nurture future generations of outstanding scientists and scholars in all fields of learning.
Administrative Structure	The Rothberg International School (RIS), located on Mount Scopus campus, is an academic and administrative entity within the Hebrew University. RIS serves as a hub for numerous international programs, degrees and courses. RIS provides

Exchange Program Information Sheet

	administrative and academic support for incoming undergraduate and graduate exchange students, including pre-arrival assistance and arrival services.
Student Support and Buddy System	<p>The Office of Student Life offers a service package to all international students at The Hebrew University, which aims to help adjust to life on campus and in Jerusalem. The Office of Student Life provides practical support throughout the experience at the Hebrew University: Security and Safety orientations, office hours, 24\7 emergency phone number, and more. Besides support services, the office provides social and cultural extracurricular activities to enhance the time at the university. The many exciting events, tours, and activities complement the academic program and allow students to see Israel from new angles.</p> <p>H.U.B. (Hebrew University Buddies) is a program run by The Office of Student Life, whose goal is to provide an opportunity for international and local students to connect through meaningful exchange. The program will match peers from varying backgrounds to foster a more diverse and heterogenous environment across The Hebrew University. H.U.B. aims to simultaneously give its local students a more 'International experience' by pairing them with students from abroad, while supplying it's international exchange students with the opportunity to experience Israel through a more authentic and informal lens.</p>

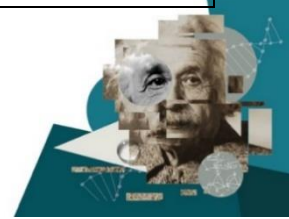
Course Information and Selection

Registration and Application Deadlines	<p><u>Nomination Deadline:</u> 1 month prior to application deadline. Please use our nomination sheet (excel format) and send it to the Exchange Coordinator: Ms. Ayala Feinmesser-Mizrahi</p> <p><u>Application Deadlines:</u> Autumn and Year – Undergraduate: May 15th Graduate: May 15th Spring – Undergraduate: November 30th Graduate: December 31st</p>
Application Information	Undergraduate Program / Graduate Program
Online Application Link	Undergraduate students Graduate students
Entry and Language Requirements	<p>GPA of 3.0 (Undergraduates) / 3.2 (Graduates)</p> <p><u>English proficiency requirements (one of the below):</u></p> <ol style="list-style-type: none"> 1) TOEFL - 80 2) IELTS - 6 3) Cambridge English Exams – B2 and above (the level needs to be specifically stated) 4) CEFR – B2 and above



Exchange Program Information Sheet

	<p>5) Language proficiency certificates issued by University Language Centers - B2 and above</p> <p>6) DAAD – a score equivalent to B2 and above/TOFEL 80 or IELTS 6. Signed and stamped by the University Language Center (the level needs to be specifically stated).</p> <p>Students who have completed degrees at universities in which the sole language of instruction is English are exempt from this requirement.</p> <p>**Students who wish to take courses taught in Hebrew in the faculty departments should note that each course has different Hebrew language requirements (ranging from level Gimel to level Heh)</p>
Course Restrictions for Incoming Students	<p>Participation in some courses requires approval from the department in which the student wishes to study.</p> <p>Certain courses have prerequisites.</p>
Credits and Workload	<p>The normal workload for a full-time student is 40 HUJI credits per academic year*.</p> <p>Our credit calculation is based on frontal lecture hours in the semester. HUJI has not adopted the ECTS credits system, however, HUJI credits can be translated into ECTS as follows:</p> <p>0.66 HUJI credits = 1 ECTS.</p> <p>(*Varies depending on the field of study)</p>
Standard Full Time Load	<p>Undergraduates: Minimum 14-15 HUJI credits per semester (1 credit = 1 <u>semester</u> hour of frontal study).</p>
Main Language of Instruction	<p>Hebrew/English</p>
Faculties and Program of Study	<p>RIS Undergraduate / RIS Graduate University faculty courses (English)</p>
Course List Available for Exchange Students*	<p>University faculty courses (English) University faculty courses (Hebrew) RIS Undergraduate (English) RIS Graduate (English)</p> <p>We highly encourage exchange students to enroll in both courses taught in university faculties and RIS courses.</p> <p>https://international.huji.ac.il/book/exchange-programs</p> <p>**Students who wish to register to courses in the fields of Agriculture, Food and Environment, should apply via The International School of Agricultural Science. Ms. Noa Schwarzwald: noapl@savion.huji.ac.il</p>



Exchange Program Information Sheet

	<p>The Robert H. Smith Faculty of Agriculture, Food and Environment, located in the city of Rehovot.</p>
<p>Language Course for Exchange Students during the semester</p>	<p>Hebrew: Absolute beginners: For absolute beginners, we offer:</p> <ul style="list-style-type: none">• A 4-credit Hebrew course during the semester* (56 hours).• Students seeking a more intensive framework will be able to join the semester Hebrew Ulpan (for additional payment - 12 credits). <p>Students with background in Hebrew:</p> <ul style="list-style-type: none">• Students coming with previous background in Hebrew will be able to join an intermediate/advanced 56 hours course (4 credits) that will be given during the semesters.• Students who are seeking a more intensive framework will be able to join the intensive module (6-12 credits) depends on their Hebrew level. <p>Arabic: Arabic courses for exchange students are all conditional upon availability. Students can take an independent study (3-credit Modern Standard Arabic or Amia) for an additional fee of 400\$ per credit.</p> <p>Our Arabic language offerings can be found here: https://overseas.huji.ac.il/academics/undergraduate-programs/special-interest-programs/arabic-language-courses/</p> <p>Please note that absolute beginners interested in studying in the 12-credit MSA course (based on availability) must participate in the pre-semester Foundations of MSA Course (for additional payment). The division for Graduate studies offers advanced literary Arabic courses during the Spring.</p> <p>* The beginners 4-credit Hebrew course offered during the semester (56 hours) will also be offered as a pre-semester course (Autumn/Spring) at an additional payment.</p>



Exchange Program Information Sheet

Semester Information

Semester System	Two
Semester Dates (including Exam Periods)	October- February / March - July
Academic Calendar	RIS Undergraduate / RIS Graduate / University* Please note that there is a difference in the academic calendar of RIS Undergraduate program and the University academic calendar. Undergraduate students should take into consideration that, if they wish to take courses both at RIS and at faculties, their semester might be extended for an additional month.

Housing, Costs, Useful Information

On-campus Housing Offered by the University	Information here . Housing in the student village dorms is conditional on availability
Off Campus Accommodation	If looking for off campus private accommodation, Information here
Approximate Living Costs	Information here
Insurance	Information here . In case a student purchases insurance independently, s/he must submit the Health Insurance Waiver form.
Visa Requirements	Information here
Useful Websites	Pre- departure Information Information about Jerusalem
Scholarship information	Masa Scholarship available for exchange students (direct application)

