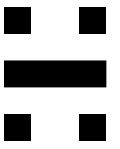


# Huddly Crew

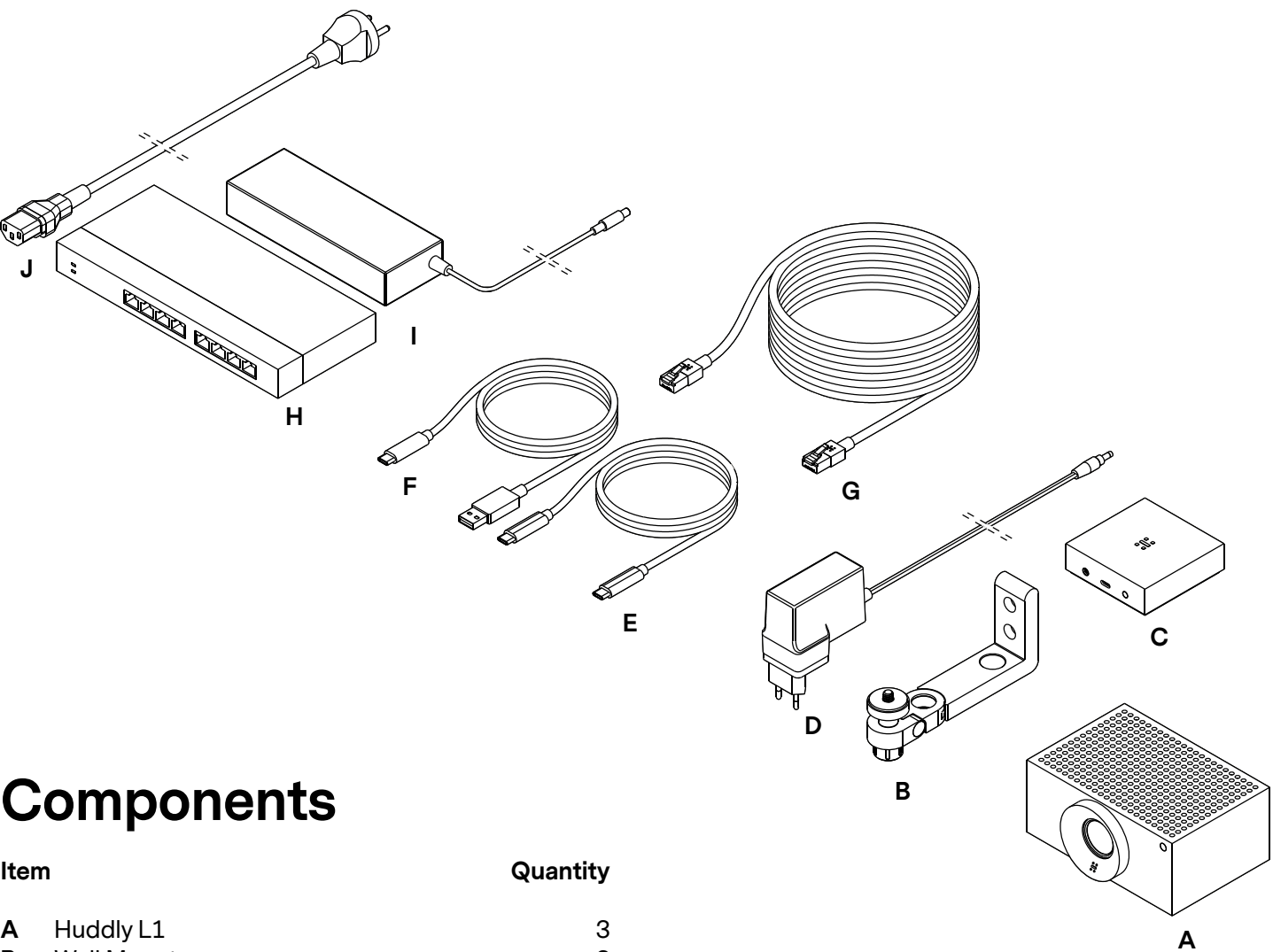


**AI-directed multi-camera  
system**



# Huddly<sup>®</sup> Crew<sup>™</sup>

## Components



## Components

Item		Quantity
A	Huddly L1	3
B	Wall Mount	3
C	USB Adapter	1
D	Power Adapter & Regional Plugs	1
E	USB C-C Cable, 0.6 m	1
F	USB A-C Cable, 0.6 m	1
G	Ethernet Cable, 3 m	4
H	Ethernet Switch	1
I	Power Adapter	1
J	Regional Power Cable	4

# Huddly<sup>®</sup> Crew<sup>™</sup>

## Product Information

## Features

### Huddly Director

Like a TV director, Huddly Director edits your meetings live using Edge AI. You can choose between Speaker and Collaboration Mode to adapt the experience to your needs.

### Speaker Mode

Ideal for formal or informative meetings, Speaker Mode identifies the main speaker and keeps the camera view focused on them.

### Collaboration Mode

Collaboration Mode is ideal for interactive sessions. Inspired by TV and movie production, it switches between the speaker and listener reactions for an engaging and natural meeting flow.

### Software-Upgradable

Huddly Crew is designed for continuous improvement through regular software upgrades that introduce new capabilities and enhancements.

### Image Enhancement

Huddly Crew features automatic white balance, color correction, and optical aberration correction. It uses bias-compensating spatiotemporal filtering with wide-area chroma filtering to reduce image noise and Dynamic Light Optimization to adjust to low lighting conditions.

### Real-Time Dewarping

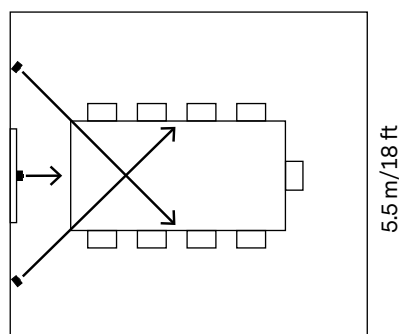
Huddly Crew's wide-angle image is automatically dewarped and perspective-corrected in real-time, resulting in a natural, true-to-life view.

### Exposure Adjustment

Huddly Crew uses an intelligent exposure adjustment mechanism to optimize brightness levels across cameras.

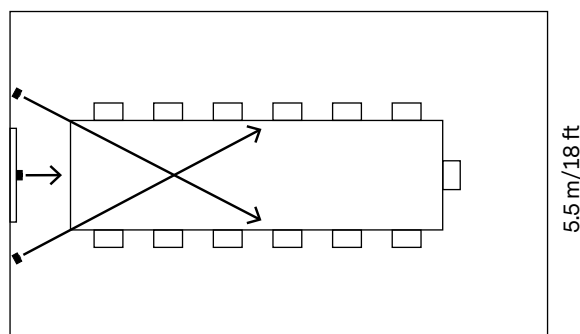
## Room Examples

6 m/20 ft



Medium room

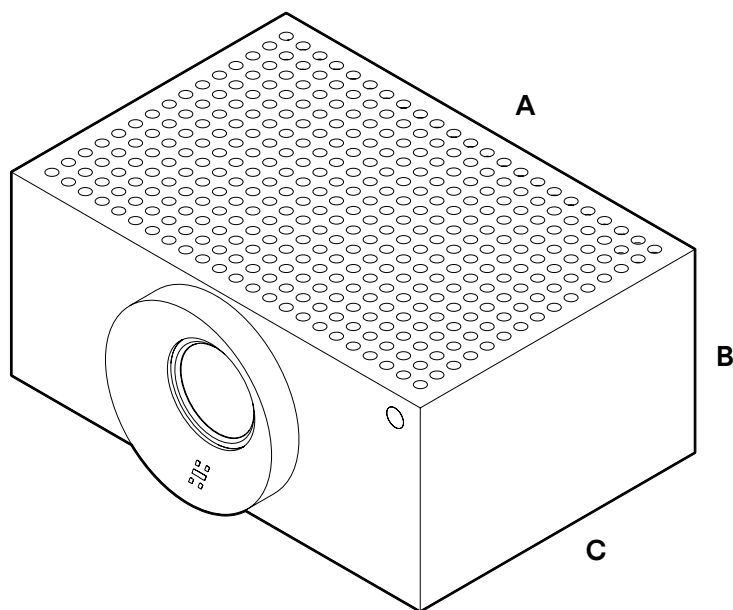
10 m/33 ft



Large room

# Huddly<sup>®</sup> Crew<sup>™</sup>

## L1



**Huddly Crew consists of three Huddly L1 network cameras with specialized Huddly Director software.**

### Measurements

<b>A</b>	Length	122 mm / 4.8 in
<b>B</b>	Height	53 mm / 2.0 in
<b>C</b>	Width	82 mm / 3.2 in
	incl. lens	90 mm / 3.5 in

### Weight

0.6 kg / 1.3 lbs

### Image

- 6K image sensor
- 20.30 Megapixels 1" CMOS Sensor
- 1080p Full HD @ 30 fps video output
- 720p HD @ 30fps video output
- Up to 5x digital zoom
- 16:9 aspect ratio output
- 180° image auto-flip

### Optics

- Wide-angle glass optics
- Horizontal field of view 92°
- Vertical field of view 65°
- Diagonal field of view 103°
- f/2.9 aperture

### System & Hardware Requirements

- Windows 10
- Huddly USB Adapter (included)

### Connectivity

- Connector: RJ45
- Cable: Cat 5e/6/7
- USB Type-C port supporting USB 2/3 (via USB Adapter)

### Hardware

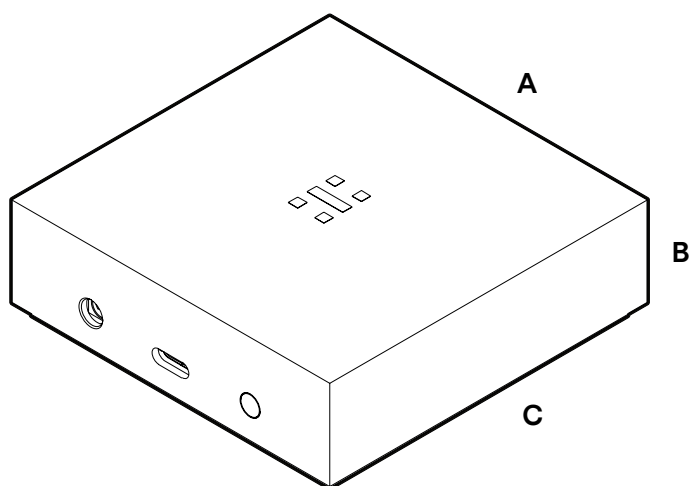
- High-performance VPU with neural compute engine
- Aluminum body

### Color

Matte Black

# Huddly<sup>®</sup> Crew<sup>™</sup>

## USB Adapter



The Huddly USB Adapter enables plug-and-play connectivity between Huddly Crew and your meeting room computer.

### Measurements

<b>A</b>	Length	82 mm / 3.2 in
<b>B</b>	Height	27 mm / 1.1 in
<b>C</b>	Width	82 mm / 3.2 in

### Weight

0.2 kg / 0.4 lbs

### Connectivity

- USB Type-C port supporting USB 2/3 (to host computer)
- RJ45 gigabit Ethernet port to camera
- DC power connector

### Power Requirements

Requires external 5V 3A power, supplied either via USB C or the included external AC/DC 5V 4A power adapter.

### Hardware Specifications

- Aluminum body
- Built-in magnet for easy mounting to metal
- Wall mount plate (included)

### Color

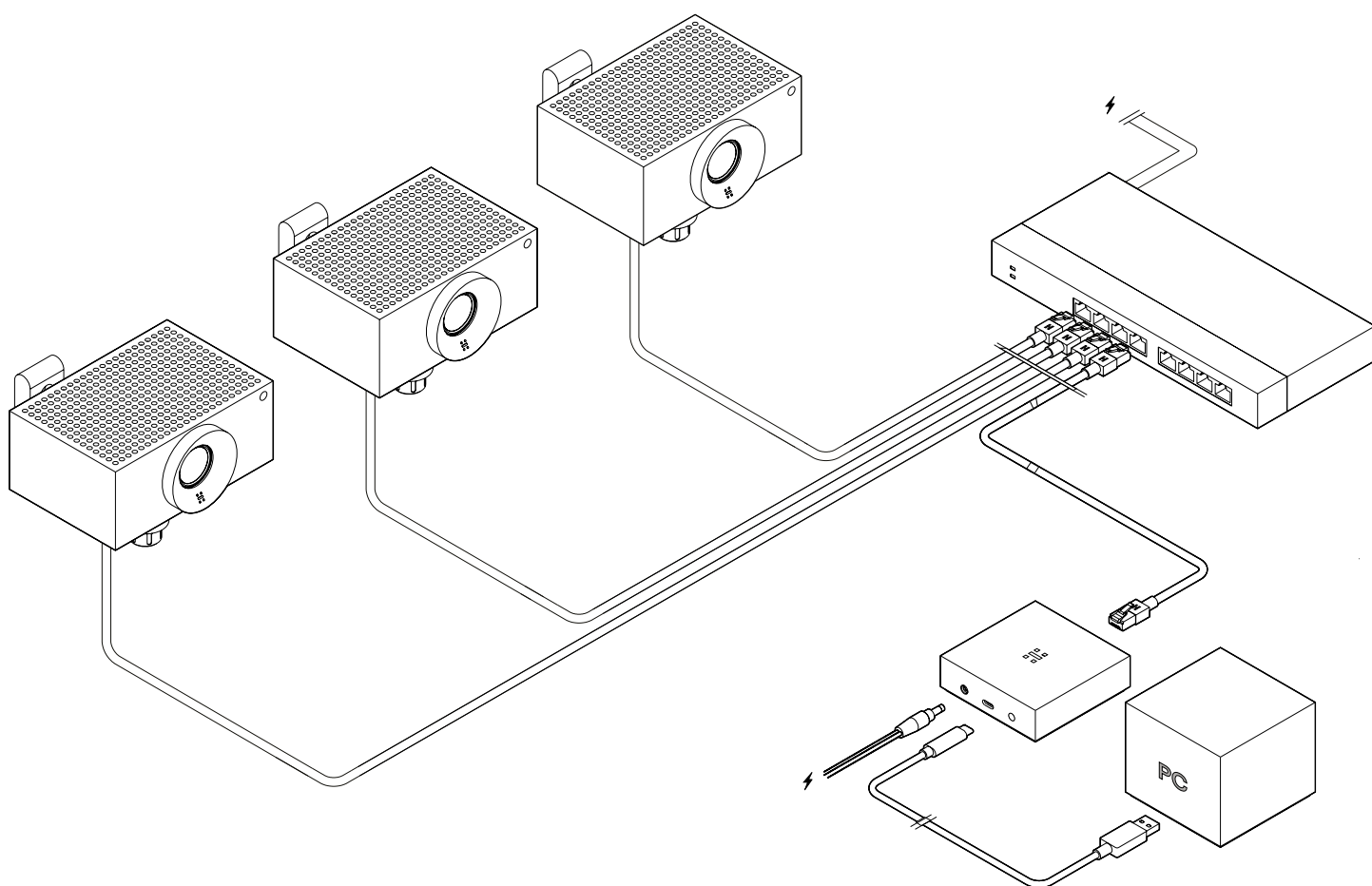
Matte Black

### System & Hardware Requirements

Windows 10

# Huddly<sup>®</sup> Crew<sup>™</sup>

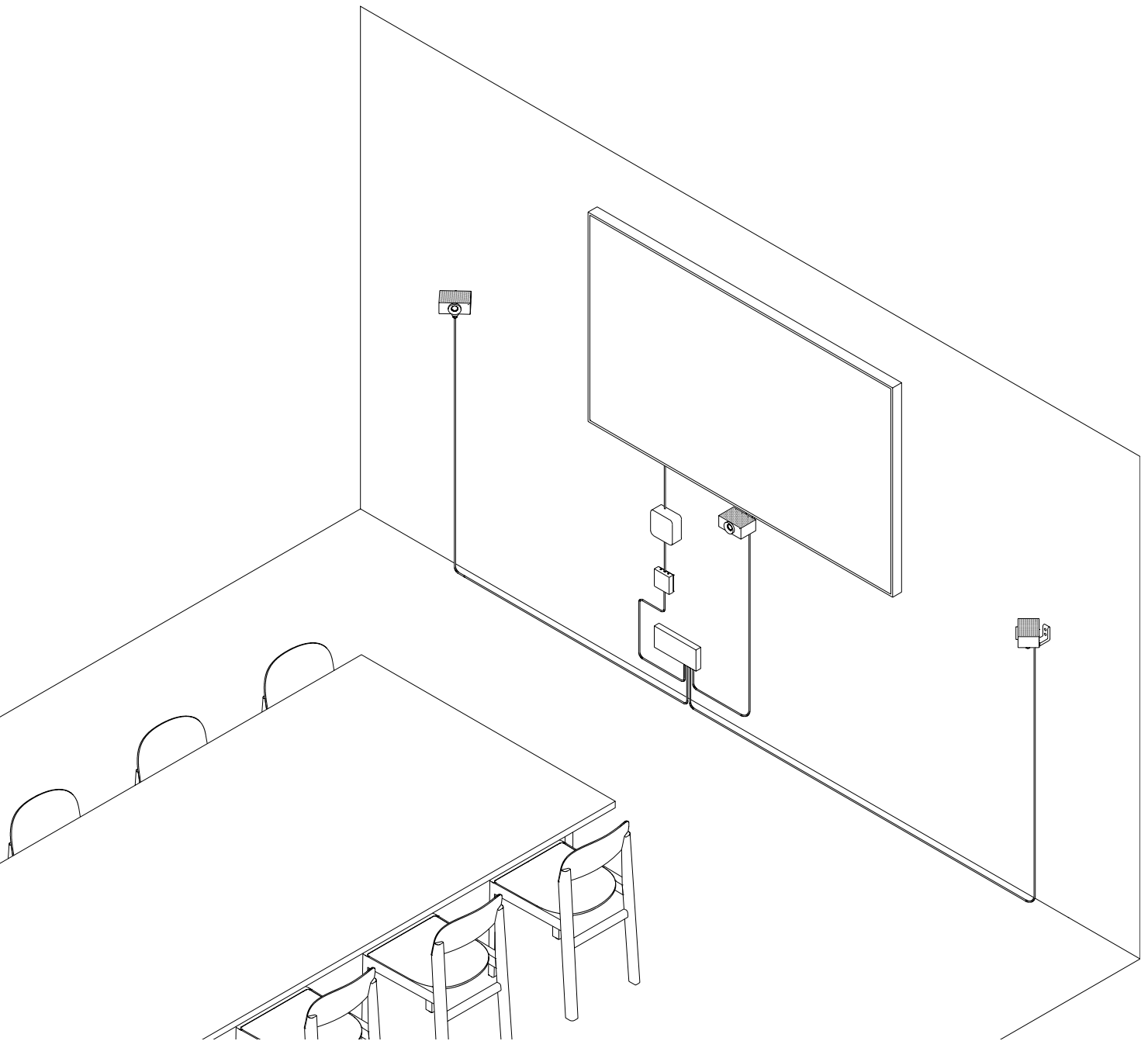
## Connectivity



## Connectivity

The cameras are linked via CAT6 Power over Ethernet cables to a Netgear switch provided by Huddly. This switch connects to a Huddly USB adapter, which links to your room system or Windows computer via a USB cable. The cameras can communicate over any distance through Ethernet, allowing for high flexibility.

# Huddly® Crew™ Setup



## Setup

To ensure an optimal experience, it's recommended to set up the system at eye level, taking into consideration the seating arrangement in the room. For more in-depth instructions, please consult the Installation Guide.